

ClickShare

Quick start guide TV mount

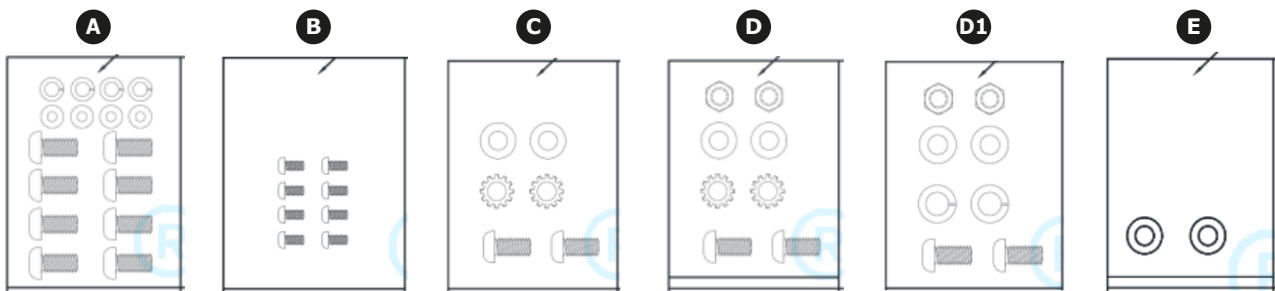
Included screw sets



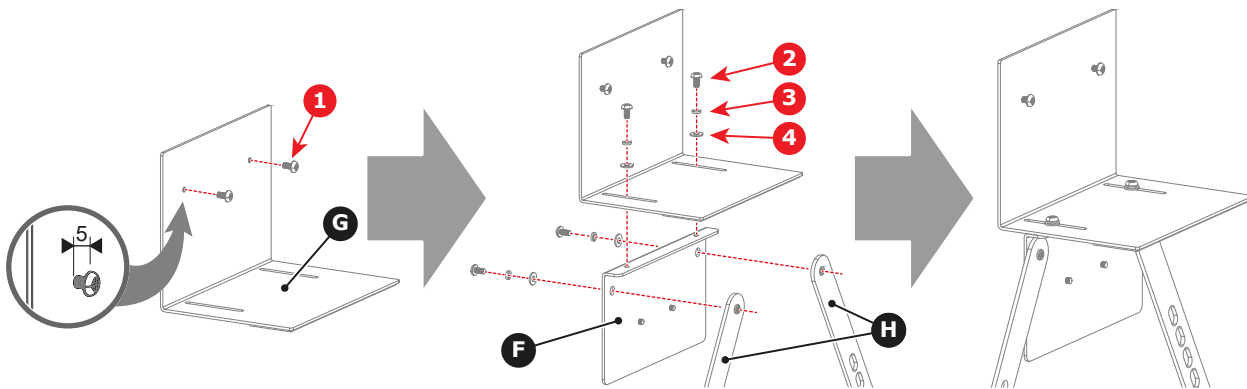
Not all included screws will be needed!

Each set of screws is organized into individually labelled bags, as illustrated.

Keep the screws, spacers, washers and nuts from the same bag together at all times.



How to assemble for ClickShare Bar



1. Insert two screws (reference 1) from **bag B** into the top plate (**G**).



Note: Leave a gap between the screw head and the top plate.

2. Assemble the top plate (**G**) on top of the L-shape plate (**F**). Use two screws (reference 2), spacers (reference 3) and washers (reference 4) from **bag A** as illustrated.



Tip: Allow for some play between the assembled parts.

3. Assemble the two braces (**H**) on the L-shape plate (**F**). Use two screws (reference 2), spacers (reference 3) and washers (reference 4) from **bag A** as illustrated.



Tip: Allow for some play between the assembled parts.

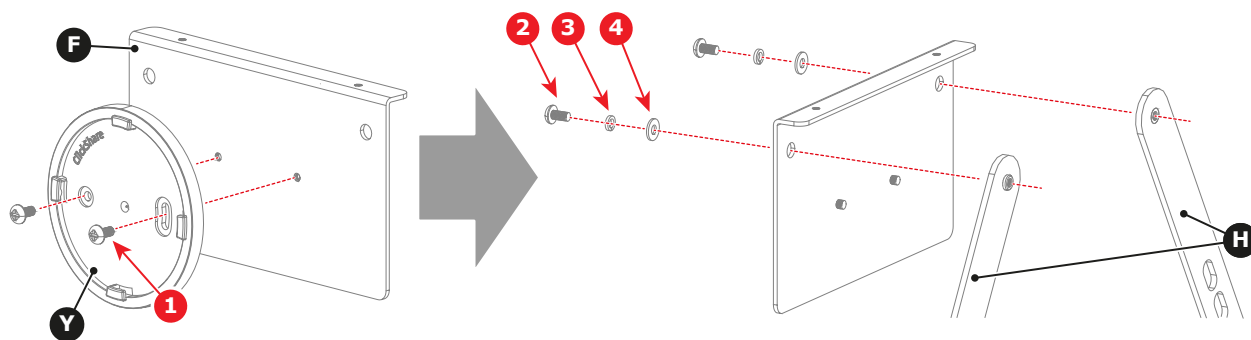
The TV mount is ready to be attached to the display.



How to assemble for ClickShare Base Unit



Only for the C-5, C-10, CX-20, CX-30 Base Units!



1. Assemble the Base Unit wall mount (**Y**) on the L-shape plate (**F**). Use two screws (reference 1) from **bag B**.
2. Assemble the two braces (**H**) on the L-shape plate (**F**). Use two screws (reference 2), spacers (reference 3) and washers (reference 4) from **bag A** as illustrated.



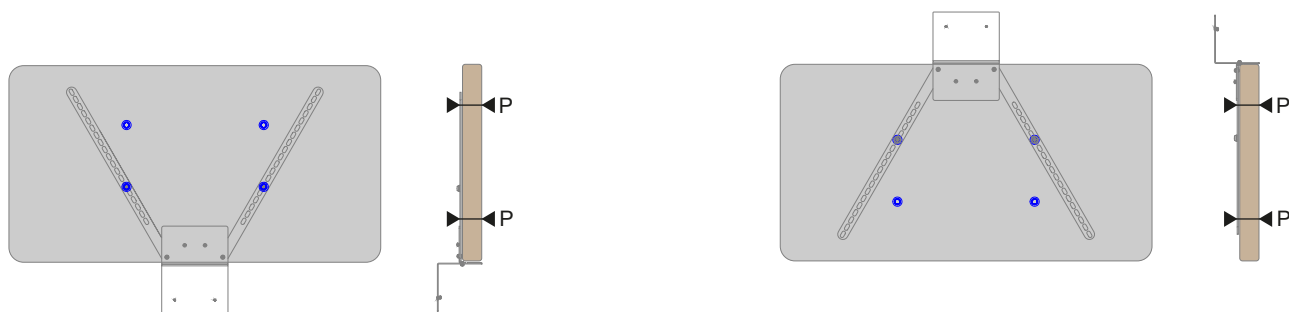
Tip: Allow for some play between the assembled parts.

3. Attach the Base Unit to the wall mount (**Y**). Follow the instructions in the installation manual.
The TV mount is ready to be attached to the display.

TV mount attachment methods

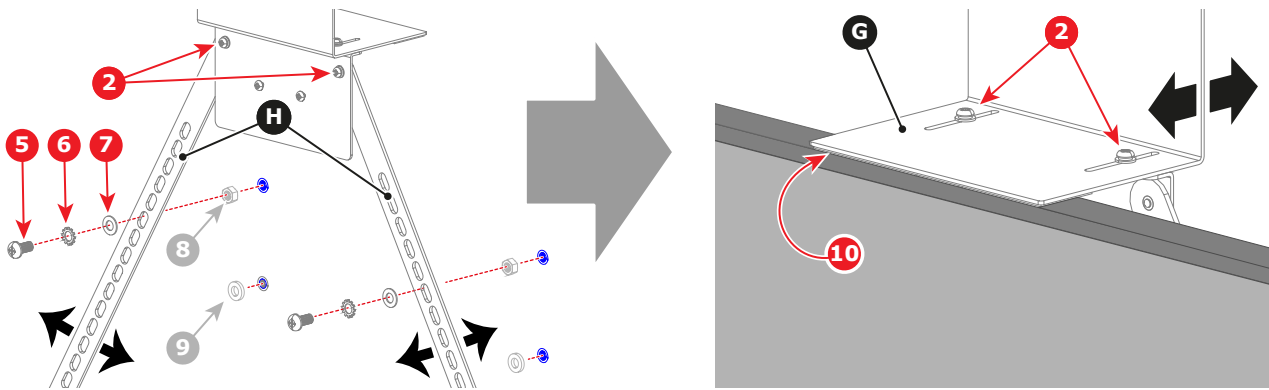
There are two methods of attaching the TV mount to the display:

- Above the display, using the top two threaded inserts of the display.
- Below the display, using the bottom two threaded inserts of the display.



The TV mount must always be parallel (**P**) to the display.

Attaching the TV mount to the display



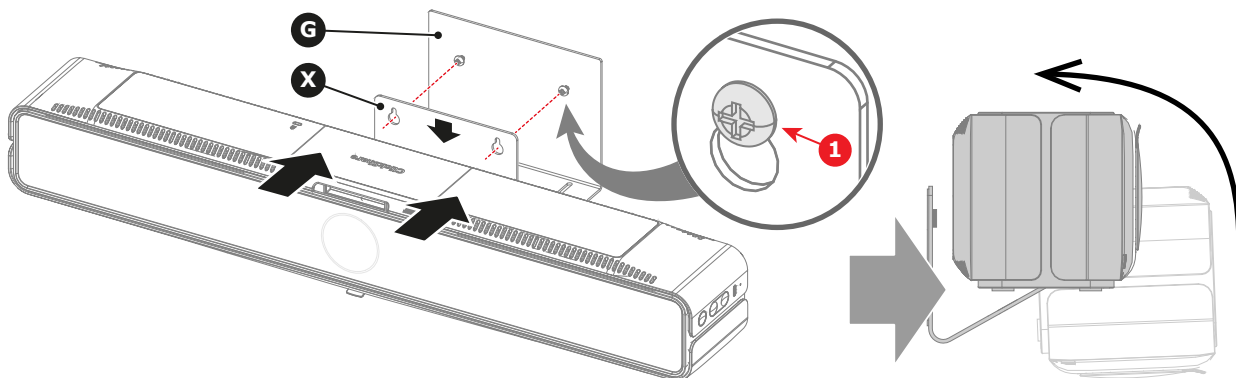
The following procedure describes “above display mounting”. The same general steps must be followed for “below display mounting”.

1. Position the TV mount over the threaded inserts of the display. Rotate the braces (**H**) as illustrated.
2. Fixate the TV mount to the display. Depending on the display different screw sets or sizes may be required:
 - ▶ Use **Bag C**, including M8 screws (reference 5), spacers (reference 6) and washers (reference 7).
 - ▶ Use **Bag D**, including M8 screws (reference 5), spacers (reference 6), washers (reference 7) and nuts (reference 8).
 - ▶ Use **Bag D1**, including M6 screws (reference 5), spacers (reference 6), washers (reference 7) and nuts (reference 8).
3. Optionally use the washers (reference 9) from **bag E**.
4. Slide the top plate (**G**) until sufficient contact between the rubber strip (reference 10) and the display bezel is made.
5. Tighten all four screws (references 2) to lock the TV mount in place.

Attaching the ClickShare bar



Cover or protect the lens to prevent damage or scratches while attaching!



1. Slide the keyholes of the ClickShare bar wall mount (**X**) over the screws in the top plate (**G**).
2. Lock the ClickShare bar in place by pushing the wall mount (**X**) downwards.
3. Tighten the two screws (reference 1) to secure the ClickShare bar in place.
4. Tilt the ClickShare bar to the desired angle.

