

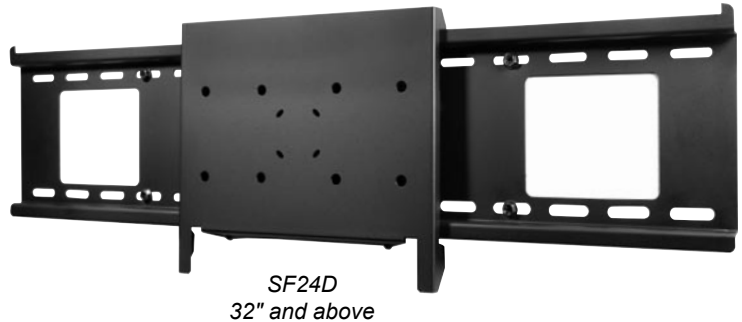
SmartMount™

Dedicated Flat/Tilt Wall Mount

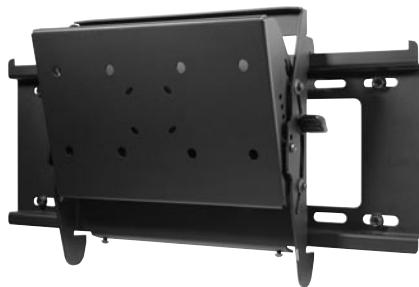
NEW!



*SF16D
22" and above*



*SF24D
32" and above*



*ST16D
22" and above*



*ST24D
32" and above*

The SmartMount Dedicated line provides screen specific solutions for mounting medium to large sized flat panel screens. Both flat and tilting models are available and compatible with Peerless' comprehensive inventory of screen-specific PLP adapter plates, ensuring a precise fit for almost any plasma or LCD screen. Additionally, installers can choose from either a wall plate for 16" stud centers, perfect for any portrait-style applications, or a more versatile wall plate for 16"-24" stud centers. All models ship pre-assembled for fast and easy installation.

- Fits any PLP adapter plate
- Flat or tilting models available
- Choose from 16" only or 16"-24" stud center wall plate

**SF16D, SF24D,
ST16D, ST24D**



SmartMount™ Dedicated Flat/Tilt Wall Mount

Model Number

SF16D, SF24D, ST16D, ST24D

Product Specifications

- Fits any PLP adapter plate
- Flat models hold screen only 1.18" from wall
- Tilting models feature -5/+15 degrees of smooth, continuous tilt
- Incre-Lok™ feature provides incremental, positive locking tilt when needed
- Models SF16D & ST16D available with 19.25" wide wall plate perfect for portrait style installations
- 200 lb weight load capacity
- Mounts to wood studs, concrete, cinder block or metal studs (with accessory metal stud fasteners)
- Ships pre-assembled for fast and easy installation
- UL tested to four times stated weight load capacity

DIMENSIONS (W x H x D)

SF16D: 19.25" x 9.825" x 1.18" (48.9 x 25 x 3 cm)
ST16D: 19.25" x 10.5" x 3.1" (48.9 x 26.7 x 7.9 cm)
SF24D: 30.75" x 9.825" x 1.18" (78.1 x 25 x 3 cm)
ST24D: 30.75" x 10.5" x 3.1" (78.1 x 26.7 x 7.9 cm)

LOAD CAPACITY

200 lb (90.7 kg)

PRODUCT WEIGHT

SF16D: 5.6 lb (2.5 kg)
ST16D: 8.8 lb (4.0 kg)
SF24D: 7.1 lb (3.2 kg)
ST24D: 10.3 lb (4.7 kg)

FINISH

Scratch resistant powder coat

AVAILABLE COLORS

Black

ACCESSORIES

Metal Stud Fasteners (ACC415)

PACKAGE CONTENTS

Wall plate, interface bracket, hardware

UNITS IN PACKAGE

1

PACKAGE SIZE (W x H x L)

SF16D, ST16D: 12.25" x 4.25" x 20.25" (31.1 x 10.8 x 51.4 cm)
SF24D, ST24D: 12.25" x 4.25" x 31.75" (31.1 x 10.8 x 80.7 cm)

PACKAGE SHIP WEIGHT

SF16D: 7.4 lb (3.4 kg)
SF24D: 9.3 lb (4.2 kg)
ST16D: 10.1 lb (4.6 kg)
ST24D: 12.2 lb (5.5 kg)

PACKAGE UPC CODE

SF16D: 735029239437
SF24D: 735029239420
ST16D: 735029240143
ST24D: 735029240150

WARRANTY

Limited 5-year



*Incre-Lok feature available
on tilting models*

(800) 865-2112
www.peerlessmounts.com

Peerless Industries, Inc.
3215 W. North Avenue, Melrose Park, IL 60160
(708) 865-8870 or (800) 865-2112 Fax: (708) 865-2941 www.peerlessmounts.com

© 2005 Peerless Industries, Inc. All rights reserved.
SmartMount is a trademark and Peerless is a registered trademark of Peerless Industries, Inc.
All other brands, product names and taglines are trademarks or registered trademarks of their respective owners.



LIT-0138