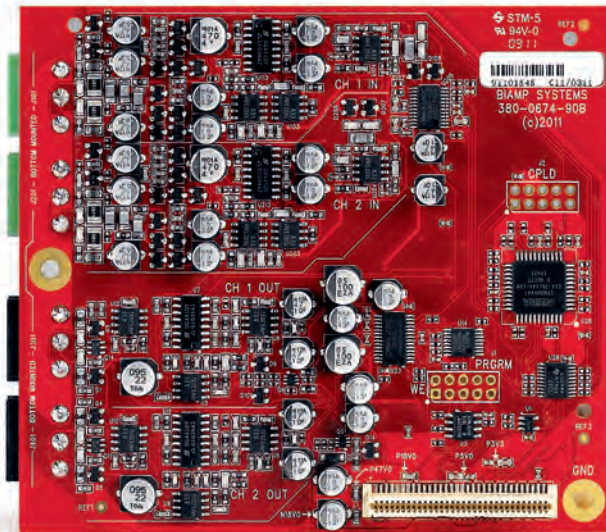


DATA SHEET

TESIRA® EIOC-4

4-CHANNEL EXPANDER INPUT/OUTPUT CARD



The Tesira® EIOC-4 is an expander card with 2 input and 2 output channels for use with the Tesira EX-MOD device. The EIOC-4 is one of three optional cards that can be mounted in Tesira EX-MOD. Each EIOC-4 provides 2 channels of mic/line audio input and 2 channels of mic/line level audio output. The inputs and outputs are electrically balanced and provided on plug-in barrier strip connectors. Software control of each input includes gain with clip indicator, +48V phantom power, mute, level and signal invert; whereas for output includes mute, level, signal invert, and full-scale output reference.

BENEFITS

- Modular I/O card can be mixed-and-matched in Tesira EX-MOD
- Large input gain sensitivity allows for analog input from virtually any source
- Selectable output levels allow for ideal gain staging
- Fully configurable and controllable in software

FEATURES

- 2 channels of balanced mic or line level input
- 2 channels of balanced mic or line level output
- 0 - 66dB gain, adjustable in 6dB increments on input
- +48V phantom power on inputs
- Selectable full-scale output reference level (24dBu, 18dBu, 12dBu, 6dBu, 0dBu, -31dBu) for best interface/performance
- RoHS compliant and AES grounded
- Covered by Biamp Systems' 5-year warranty

ARCHITECTS & ENGINEERS SPECIFICATION

The I/O card shall have 2 input and 2 output channels designed exclusively for use with Tesira EX-MOD. The modular card shall provide 2 balanced inputs and 2 balanced outputs on plug-in barrier strip connections. Software configuration and control for each input shall include gain with clip indication, phantom power on/off, mute, level, and signal invert; whereas for each output shall include mute, level, signal invert, and selectable output reference level (24dBu, 18dBu, 12dBu, 6dBu, 0Bbu, -31dBu). Analog-to Digital and Digital-to-Analog conversion shall be 24-bit with a sampling rate of 48kHz. Performance specifications (20Hz-20kHz) shall be: Frequency Response +0/-0.25dB. The modular I/O card shall incorporate AES48-2005 Grounding and EMC practices and shall be compliant with the RoHS Directive. Warranty shall be 5 years. The I/O card shall be Tesira EIOC-4.

TESIRA EIOC-4 SPECIFICATIONS

Frequency Response (20Hz-20kHz @ +4dBu):	+0/-0.25dB	Selectable Full Scale Output Levels:	+24dBu, +18dBu, +12dBu, +6dBu, 0dBu, -31dBu
Input THD+N (20Hz-20kHz):		Output THD+N (20Hz-20kHz):	< 0.0035%
@ 0dB Gain, +4dBu In:	< 0.006%	Output Cross Talk (channel to channel @ 1kHz):	< -95dB
@ 54dB Gain, -50dBu In:	< 0.040%	Output Dynamic Range (20Hz-20kHz, 0dB):	> 110dB
Input Cross Talk (channel to channel @ 1kHz):		Output Impedance (balanced):	200Ω
@ 0dB Gain, +4dBu In:	< 85dB	Sampling Rate:	48kHz
@ 54dB Gain, -50dBu In:	< 75dB	A/D and D/A Converters:	24-bit
Input Dynamic Range (20Hz-20kHz, 0dB):	> 108dB	Compliance:	AES48-2005 Grounding and EMI practices RoHS Directive (Europe)
Input Impedance (balanced):	8kΩ		
Input Gain Range (6dB Steps):	0 - 66dB		
Input Phantom Power:	+48 VDC (7mA/input)		