

# E-VOLST

Stereo, 2 x 40 watts Euro volume control, white



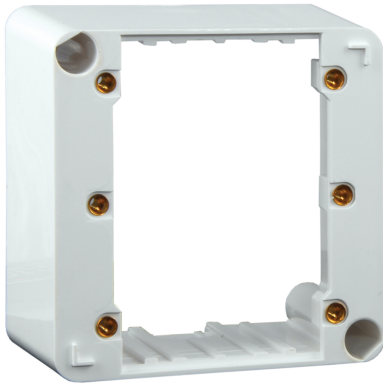
The Apart E-VOLST is a 4 ohms, low impedance stereo volume control that can handle up to 2 x 40 watts of power. It is very versatile thanks to the step-by-step attenuation in 10 steps.

The E-VOLST is built on a universal chassis that easily can be integrated with Gira, Jung and Euro. It can only be used with E-MODON as a surface mounted volume control.

## TECHNICAL SPECIFICATIONS

stereo/mono	stereo	impedance in ohms	4 - 8 - 16
applicable low impedance	Yes	applicable 100V	No
max. power in watts	2 x 40	steps	10
24 volt priority relais	No	mounting	screw
connector type	euroblock 8-pole	max. cable in mm <sup>2</sup>	2.5
width in mm	80	height in mm	80
depth in mm	60	weight in gr	270
Net weight product (kg)	0,28		

[MORE PICTURES](#)

**ACCESSORIES****E-MODON**

Built-on box for wall controls