

COLW101

Column speaker for speech 70/100V



The COLW101 offers excellent audio directivity for music as well as speech. Thanks to the elegant design, this speaker is ideal for indoor and outdoor use: from sports fields to public buildings or recreational areas, meeting rooms or educational facilities.

Apart column speakers offer the perfect combination of looks and acoustical qualities! The COLW101 has 10 x 3,3" woofers and 1 x 1" tweeter.

A standard wall bracket and installation tools are included.

The COLW101 loudspeakers can be painted in any colour.

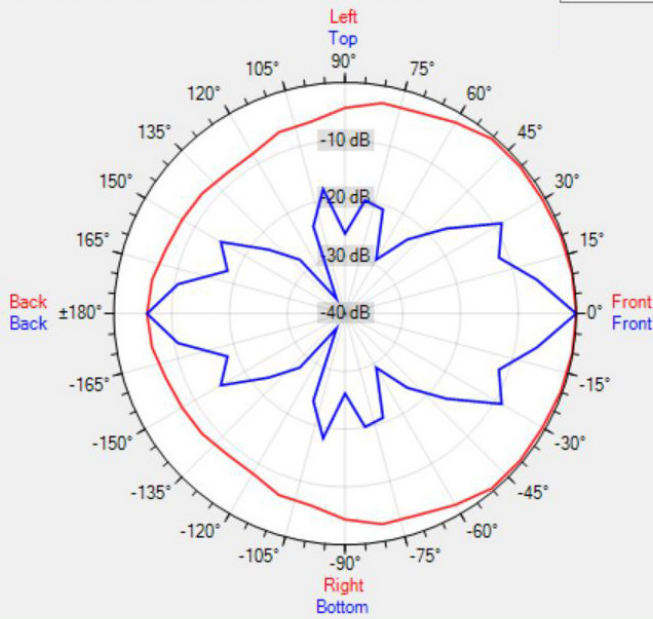
TECHNICAL SPECIFICATIONS

height in mm	1180	width in mm	100
depth in mm	83	loudspeaker system	multiple
woofer size in inch	10 x 3,3	woofer cone material	coated paper
tweeter size in inch	1	mounting system	L-brackets
colour	white	100V transformer power taps in watts	100 - 60 - 40
70V transformer power taps in watts	100 - 60 - 40 - 20	impedance (ohms)	8
low impedance dynamic power in watts	140	low impedance RMS power in watts	100
SPL 1W/1m in dB	99	max SPL 1m in dB	118
frequency response in Hz	160 - 20K	main construction material	aluminium
grille main material	aluminium	IP rating	
Horizontal dispersion angle 1000 Hz	180°	Vertical dispersion angle 1000 Hz	65°
closest RAL colour (subject to deviations)	RAL9016	Net weight product (kg)	7.7

POLAR PLOTS

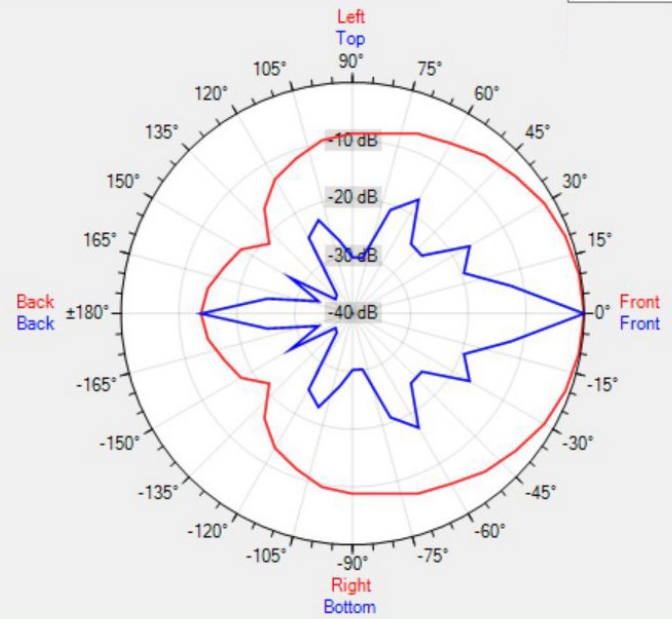
Data Shown: COLW101 (Apart Audio)
Display Parameters: Frequency: 1000Hz (1/24th Octave)

Horizontal
Vertical



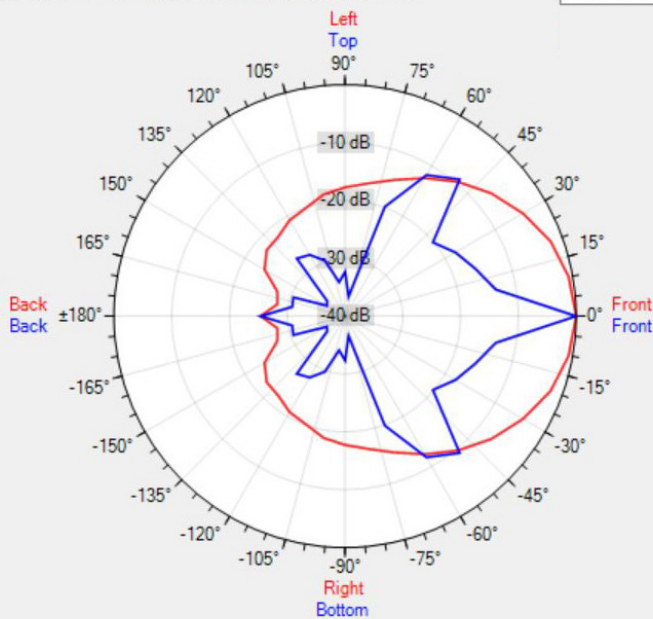
Data Shown: COLW101 (Apart Audio)
Display Parameters: Frequency: 2000Hz (1/24th Octave)

Horizontal
Vertical



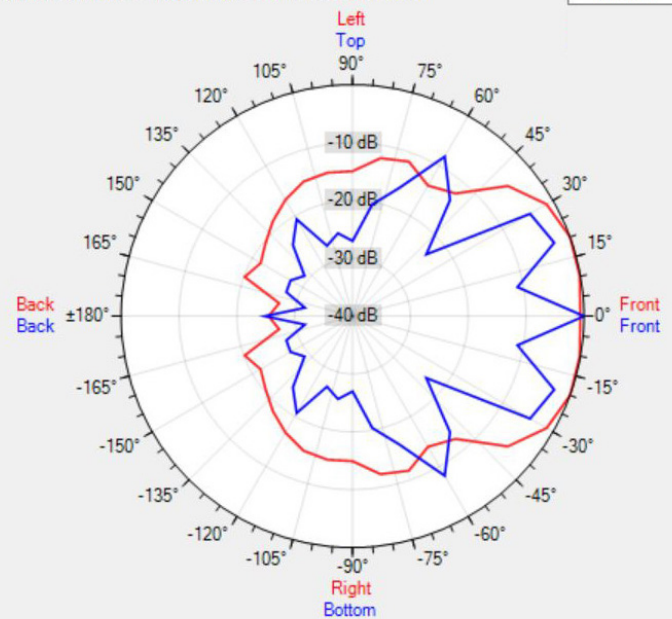
Data Shown: COLW101 (Apart Audio)
Display Parameters: Frequency: 4000Hz (1/24th Octave)

Horizontal
Vertical

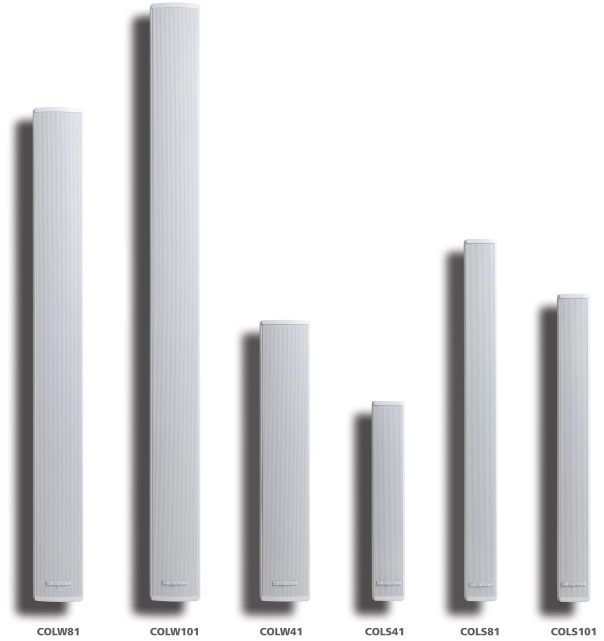


- Please recalculate balloon - Data Shown: COLW81 (Apart Audio)
Display Parameters: Frequency: 8000Hz (1/24th Octave)

Horizontal
Vertical



MORE PICTURES



COLW81

COLW101

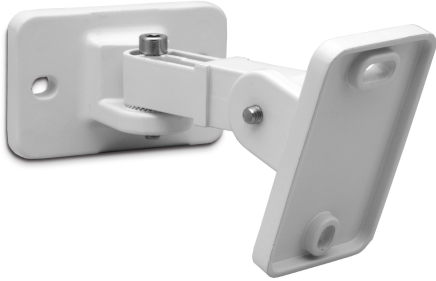
COLW41

COLS41

COLS81

COLS101

ACCESSORIES



COLWBRA

Bracket for easy tilting and rotating of COLW sound columns